

Karen Jefferson  
lamplighter  
NURTURING ~ GROWING ~ ACKNOWLEDGING



The Grief Practitioner Gold Coast [www.Karenjefferson.com](http://www.Karenjefferson.com) 0437 633 737 July 2019

## THE CHERISH Bereaved Parent's Support Groups 2019



A warm invite to all the bereaved parents of the Gold Coast & beyond, to share and connect with other grieving parents

monthly, in a safe, relaxed and non judgemental environment. Whether you have experienced the end of your Pregnancy by: Stillbirth, Interruption in Pregnancy due to Fetal Abnormalities, Miscarriage Ectopic. Higher Multiples Loss Neonatal and Sudden and Unexpected Death including SIDS and Fatal Sleeping Accidents:

*"We support by honouring the significance of our unique journey of grief, beyond the circumstances". - Karen J .*

### Monday Evening Support Dates:

Monday 26th August from 6pm

Monday 28th October from 6pm

Monday 25th November from 6pm

Please note these meetings are for Adults only and group starts at 7pm.

### OTHER 2019 EVENTS:

15 October - Pregnancy and Infant Loss Memorial Day/  
Wave of Light - Allamby Memorial Park

CHERISH Tribe Christmas Celebration - TBA

2019 Christmas Service - TBA

**These dates may be subject to change. Please make contact to confirm dates, times and location—Thank you RSVPS or queries to:**



— Trust • Empowerment • Acknowledge • Respect • Support —

We are blessed to offer the bereaved community a new group, for those **who are at the crossroads of a new pregnancy after loss, who are currently pregnant after loss and those who are parenting after loss.**

### Friday Morning Support Dates:

July 26th - 10.30am

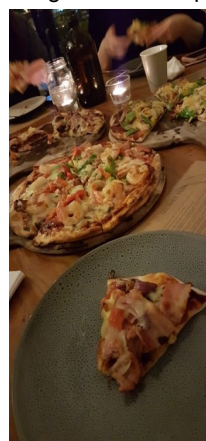
Sept 27th - 10.30am

Nov 29th - 10.30am

Please note that these gatherings will include rainbows

### Mid Year Ladies Night - June

Thank you to the ladies that shared this years Mid Year Ladies Night. Lovely food, conversation and a few cocktails along with catch ups and laughter, were had.



### Conferences of Interest - NZ



Sands National Conference 2019

20-22 September 2019  
Christchurch, New Zealand